

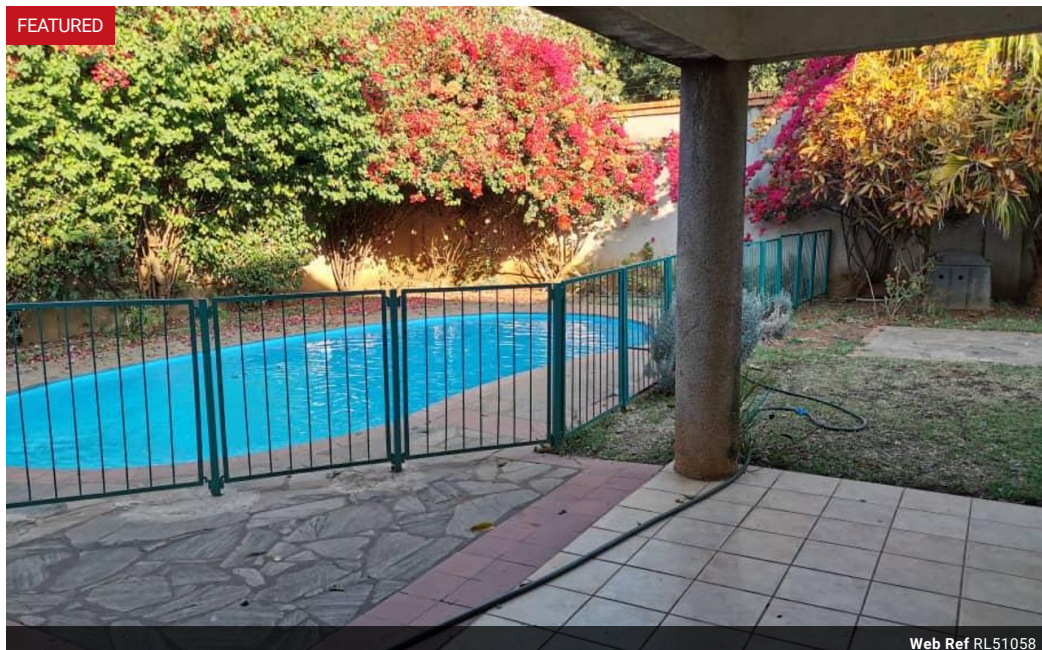


**Elvira Brentnall**  
+260968 336061  
elvira@seeff.com

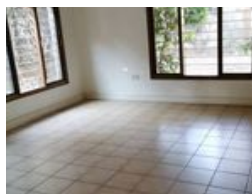
Contact **Lusaka**

**+260 954152925**

Foxdale Court 114  
1st Floor, Second Building  
609 Zambezi Road  
Roma  
Lusaka  
10101



Web Ref RL51058



**POA**

**Lease Period** 12 months  
**Annual Escalation** -

**Availability** Immediately

**Deposit** -

3 2.5 1

### Neat cluster in Sunningdale

Prime location - diplomats & residences...  
Cluster style complex, one villa available.  
4 bedrooms, MSC.  
Private mature garden and swimming pool - for each unit.  
Not brand new but in a good condition.  
Air-conditioned.  
Contact me for viewing arrangements.

### Features

<b>Pets Allowed</b>	Yes		
<b>Interior</b>		<b>Exterior</b>	
Bedrooms	3	Garages	1
Bathrooms	2.5	Carports / Parkings	1
Kitchens	1	Security	Yes
Recep. Rooms	2	Pool	Yes
Furnished	No		