



**Elvira Brentnall**  
0968 336061  
elvira@seeff.com

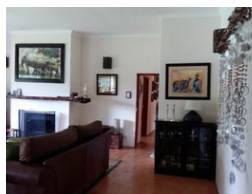
Contact **Lusaka**

**260 954152925**

Foxdale Court 114  
1st Floor, Second Building  
609 Zambezi Road  
Roma  
Lusaka  
10101



Web Ref RL53700



**POA**

**Lease Period** 12 months  
**Annual Escalation** -

**Availability** Negotiable

**Deposit** -

 5  3

### Lovely House on 5 acre plot - State Lodge

Available in State Lodge area;

A lovely country style home,  
Offers 5 acres of green spaces,  
Great family home, letting unfurnished.  
It is spacious, having 5 bedrooms with two rooms en-suite  
All with BICs,  
Modern kitchen & lounge  
Separate laundry  
Two A/C s - Lounge and main bedroom  
All bathrooms have showers,  
20 Kva generator as well as inverter with solar panels,  
Trellidoors for security, all around as well as  
Electric fence and automated gate

Underground irrigation  
Large, covered entertainment patio with mozzie protection screens for evenings or BBQs outdoors,  
The house is overlooking the mature indigenous trees & cultivated garden with the fenced swimming pool

### Features

Pets Allowed		Yes			
Interior				Exterior	
Bedrooms	5			Carports / Parkings	4
Bathrooms	3			Security	Yes
Kitchens	1			Dom. Accom.	1
Recep. Rooms	2			Pool	Yes
Furnished	No				
				Sizes	
				Land Size	2Ha