



Alick Phiri
0763549295
alick.phiri@seeff.com

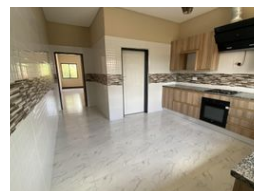
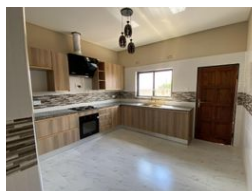
Contact **Lusaka**

260 954152925

Foxdale Court 114
1st Floor, Second Building
609 Zambezi Road
Roma
Lusaka
10101



Web Ref RL1454



ZMW10,000 pm

Lease Period 12 months
Annual Escalation -

Availability Immediately

Deposit -

3 2

3 bedroom flats in State Lodge

Modern Complex with Semi-Detached Flats in a Serene Neighborhood

Location: State Lodge, Lusaka, Zambia

Price: K20,000 per flat

Discover the epitome of modern living in this well-appointed complex featuring two semi-detached flats, offering a total of four residences. Situated in a serene neighborhood, this property boasts spacious layouts, contemporary design, and a host of amenities to enhance your lifestyle.

Key Features:

- Two semi-detached flats, each offering identical layouts and accommodation
- Three bedrooms in each flat, including a self-contained master bedroom for added comfort and privacy
- Expansive living spaces comprising a dining room, kitchen with pantry/laundry area, and a comfortable living room, perfect for entertaining guests or relaxing with family
- Common bathroom conveniently located to...

Features

Interior

Bedrooms	3
Bathrooms	2
Kitchens	1
Recep. Rooms	2
Furnished	No

Exterior

Pool	No
------	----