



Elvira Brentnall
0968 336061
elvira@seeff.com

Contact **Lusaka**

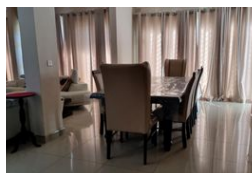
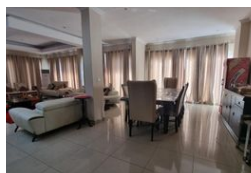
260 954152925

Foxdale Court 114
1st Floor, Second Building
609 Zambezi Road
Roma
Lusaka
10101

FEATURED



Web Ref RL1295



POA

Lease Period 12 months
Annual Escalation -

Availability Negotiable

Deposit -

 7  4

Large Home in Roma Park

Available in Roma Park - Large Villa

Situated in a prime estate with fairly new homes and good security, This is a large 6 bedroom house with a 3 bedroom cottage. Very spacious living areas across the ground floor with kitchen, scullery & laundry, dining & double living rooms. Most areas are air-conditioned, The master bedroom with two extra rooms on first floor as well as self-contained studio with large balcony.

There is also detached 3 bedroom cottage offering extra accommodation for teens, grannies or frequent visitors. Contact me for further info & bookings

Features

Pets Allowed Yes

Interior

Bedrooms	7
Bathrooms	4
Kitchens	2
Recep. Rooms	5
Studies	1
Furnished	No

Exterior

Carports / Parkings	6
Security	Yes
Dom. Accom.	0.5
Pool	No

Extras

Large cottage