



Lusungu Kayela
0977230228
lusungu.kayela@seeff.com



Alick Phiri
0763549295
alick.phiri@seeff.com

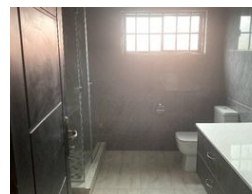
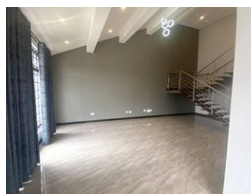
Contact **Lusaka**

260 954152925

Foxdale Court 114
1st Floor, Second Building
609 Zambezi Road
Roma
Lusaka
10101



Web Ref RL1091



ZMW33,000 pm

Lease Period 12 months
Annual Escalation -

Availability Immediately

Deposit -

3 3

Newly built double storey 3 bedroom semi-detached in Roma Park

This is a newly built 3 bedroom semi detached double storey house in Roma Park. Available as furnished and unfurnished, each unit on either side has private yard with separating wall and separate gate entrances. Accommodation includes living room, dining, kitchen, one bedroom downstairs, a common bathroom, another self contained bedroom upstairs and master self contained bedroom with walk in closet and overlooking balcony. Others include secondary small kitchen, workers toilets and store room.

Each of the two units will come fitted with an inverter for back up power, cooker, aircons in all rooms and washing machine. Each unit has a swimming pool and property has CCTV cameras.

Furnished: \$3,000
Unfurnished: \$2,000

Situated in Roma Park Gated Estate with nearby amenities including East Park, Arcades, Lics school and...

Features

Interior

Bedrooms	3
Bathrooms	3
Kitchens	1
Recep. Rooms	2
Furnished	No

Exterior

Pool	Yes
------	-----