



**Alick Phiri**  
0763549295  
alick.phiri@seeff.com



**Lusungu Kayela**  
0977230228

lusungu.kayela@seeff.com

Contact **Lusaka**

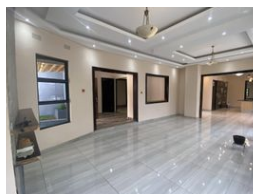
260 954152925

Foxdale Court 114  
1st Floor, Second Building  
609 Zambezi Road  
Roma  
Lusaka  
10101

### FEATURED



Web Ref RL1234



### POA

**Lease Period** 12 months  
**Annual Escalation** -

**Availability** Immediately

**Deposit** -

3 2

### 3 bedroom newly built country feel home in Roma Park

This is a newly built 3 bedroom house sitting on 2,400sqm land in Roma Park with a country feel having well maintained natural vegetation. Accommodation includes living room, dining, kitchen, Scullery, kids play area, office, Guest toilet, 2 bedrooms, common bathroom and master self contained bedroom with walk in closet and bathroom.

The premises also has a quarter serving as a gym, social areas with flora around the premises. Surrounded by greenery lawn around property with an option for gardening making a lovely home.

It is located in the Roma Park Gated Estate in close proximity to places like East Park Mall and Lics school with various other amenities around.

Available 1st September, 2022

Price: \$3,000

Call for further details and viewing appointments

### Features

#### Interior

Bedrooms	3
Bathrooms	2
Kitchens	1.5
Recep. Rooms	2
Studies	1
Furnished	No

#### Exterior

Pool	No
------	----