



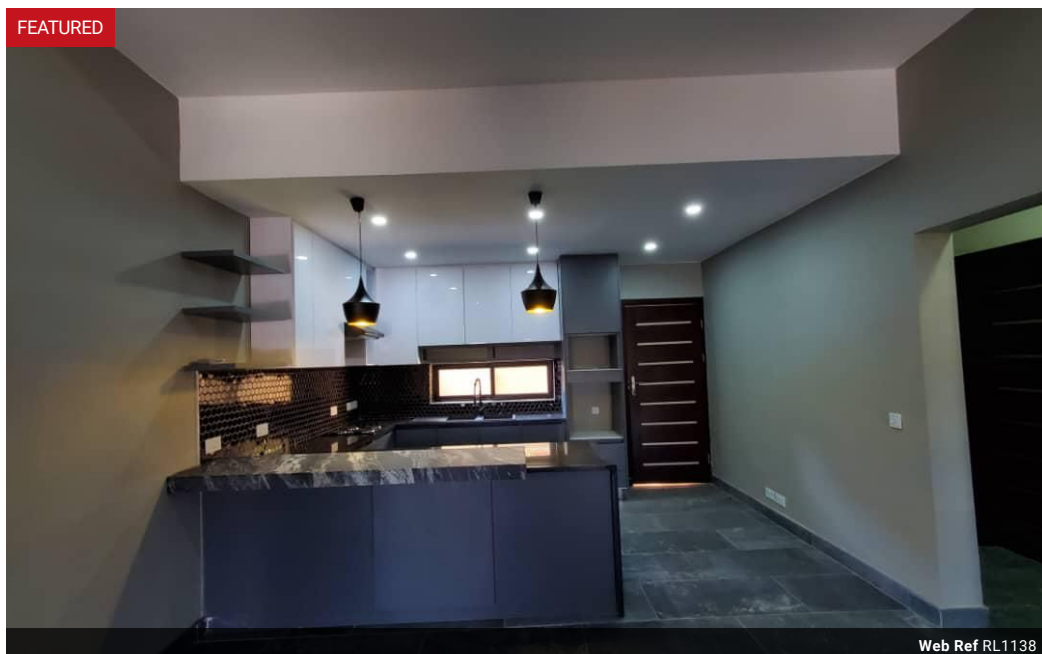
Elvira Brentnall
+260968 336061
elvira@seeff.com

Contact **Lusaka**

+260 954152925

Foxdale Court 114
1st Floor, Second Building
609 Zambezi Road
Roma
Lusaka
10101

FEATURED



Web Ref RL1138



POA

Lease Period 12 months
Annual Escalation -

Availability Negotiable

Deposit -

 2  2

Lovely Apartments in Roma Park

These are two brand new units in a lovely spot of Roma Park. This is an upmarket community in Lusaka's Eastern suburbs with close proximity to LICs and Foxdale Court Centre. Each unit has a small backyard and they share a swimming pool. They have 2 bedrooms and bathrooms each and Kitchen, dining & living rooms are open plan. There is a small area by the swimming pool suitable for BBQs. The swimming pool is very private & overlooking a green tree rich garden, Furnished option is available. Contact me for further details & bookings.

Features

Interior

Bedrooms	2
Bathrooms	2
Kitchens	1
Recep. Rooms	2
Furnished	No

Exterior

Carports / Parkings	2
Security	Yes
Pool	Yes

Extras

Private Pool Security Barbecue Area Available Furnished