



Elvira Brentnall
0968 336061
elvira@seeff.com

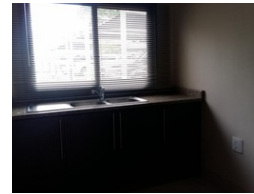
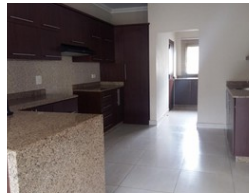
Contact Lusaka
260 954152925

Foxdale Court 114
1st Floor, Second Building
609 Zambezi Road
Roma
Lusaka
10101

FEATURED



Web Ref RL606



POA

Lease Period 12 months Availability Immediately Deposit -
Annual Escalation -

3 2 1

3 Bedroom Cluster Homes

These are 3 bedroom units with 2 bathrooms and private garden, each. Modern fitted kitchens & bathrooms with good size patio and a bbq area. Swimming pool in the complex with covered entertainment space. Covered parking & paved driveway. Well secure, reduced load shedding. Vicinity LICs & Foxdale Court Shops. Furnished option available now. Viewing by appointment.

Features

Interior		Exterior	
Bedrooms	3	Garages	1
Bathrooms	2	Security	Yes
Kitchens	1	Pool	Yes
Recep. Rooms	2		
Furnished	No		