

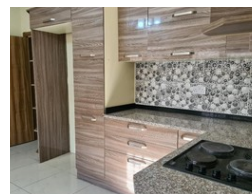
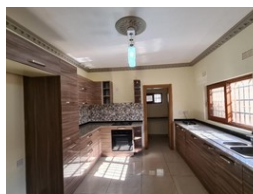


Elvira Brentnall
0968 336061
elvira@seeff.com

Contact **Lusaka**

260 954152925

Foxdale Court 114
1st Floor, Second Building
609 Zambezi Road
Roma
Lusaka
10101



POA

Lease Period 12 months
Annual Escalation -

Availability Immediately

Deposit -

 4  3

New & Modern 4 Bedroom Townhouse in Rhodespark

These are centrally located double storey homes - vicinity International School of Lusaka, Manda Hill Shopping Centre as well as Rhodespark Mosque - They are newly built.
Each has 4 bedrooms and master is en-suite.
Very spacious with separate lounge and TV Room, enclosed balcony..
Great size modern kitchen with gas option.
Bath tubs & showers in bathrooms,
In a complex of 6 with double car parking for each house.
Paved yard. Great residence for those seeking to be within this area.
Minimal load shedding, good security..
Viewing by appointment.

Features

Interior

Bedrooms	4
Bathrooms	3
Kitchens	1
Recep. Rooms	2.5
Studies	0.5
Furnished	No

Exterior

Carports / Parkings	2
Security	Yes
Pool	No

Extras

ZESCO GUARD FEES SHARING