



Mwila Nakazwe
0 973251706
mwila@seeff.com

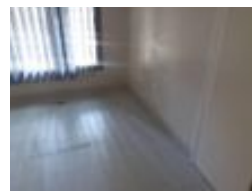
Contact **Lusaka**

260 954152925

Foxdale Court 114
1st Floor, Second Building
609 Zambezi Road
Roma
Lusaka
10101



Web Ref RL1541



POA

Lease Period Negotiable
Annual Escalation -

Availability Immediately

Deposit -

 8  6

Standalone Houses For Rent As offices In Rhodespark Near Great East Road

Located a few metres off Great East road, the property comprises 3 buildings, Main building- (5 offices), two toilets, Spacious cottage with partitioned offices, two toilets, second cottage-spacious with two toilets, plus external toilet, ample parking. Asking Price \$4000.Call for more details.

Features

Interior

Bedrooms	8
Bathrooms	6
Recep. Rooms	3
Furnished	No

Exterior

Carports / Parkings	3
Pool	No