



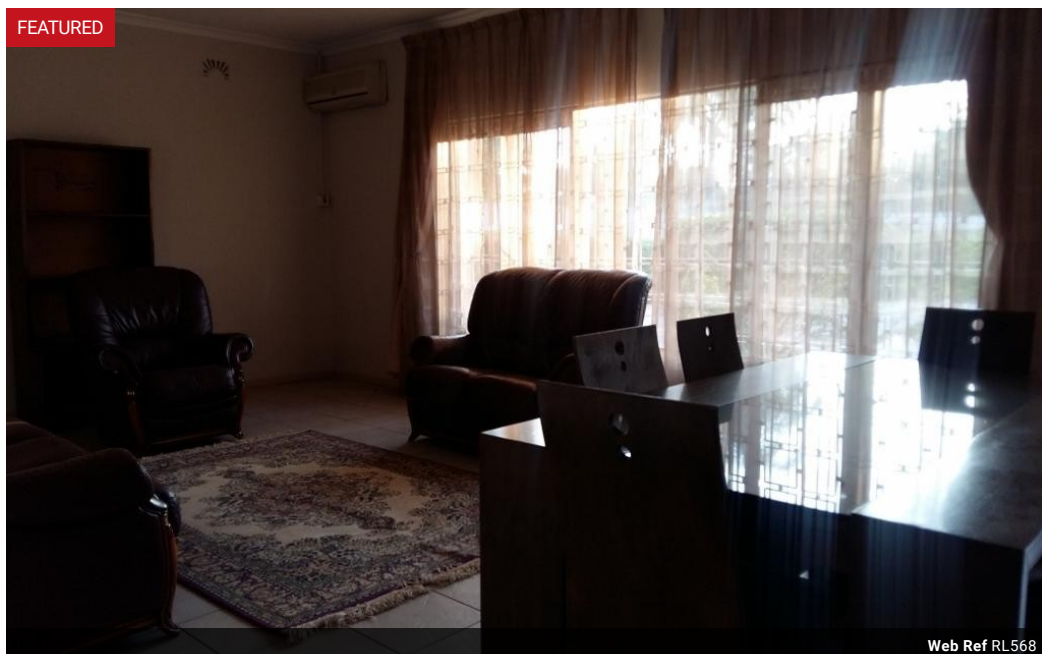
**Elvira Brentnall**  
+260968 336061  
elvira@seeff.com

Contact **Lusaka**

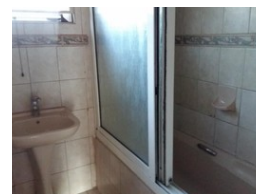
**+260 954152925**

Foxdale Court 114  
1st Floor, Second Building  
609 Zambezi Road  
Roma  
Lusaka  
10101

FEATURED



Web Ref RL568



POA

**Lease Period** 12 months  
**Annual Escalation** -

**Availability** Immediately

**Deposit** -

 2  1  1

### Two bedroom unit in Rhodespark

Available now:  
2 bedroom unit with one bathroom.  
Common garden with swimmingpool.  
Garage and wash up area.  
Open plan dining/living room  
Air-conditioned  
Central location.  
Reasonably priced.  
Secure  
Reduced load shedding

### Features

#### Interior

Bedrooms	2
Bathrooms	1
Kitchens	1
Recep. Rooms	1.5
Furnished	No

#### Exterior

Garages	1
Carports / Parkings	1
Security	Yes
Pool	Yes