



Elvira Brentnall
+260968 336061
elvira@seeff.com

Contact **Lusaka**

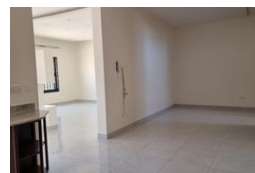
+260 954152925

Foxdale Court 114
1st Floor, Second Building
609 Zambezi Road
Roma
Lusaka
10101



FEATURED



Web Ref RL1264



POA

 3  2.5

Lease Period 12 months
Annual Escalation -
Lease Excludes:
ZESCO

Availability Immediately

Deposit -

Neat 3 Bedroom Units in Rhodespark

Available now:

A few units are available in this central location Apartment Block.
They are 3 bedrooms each, Master bedroom is en-suite,
Modern and with large kitchen, separate dining & living room.
Large pantry, Back veranda
Double storey,
They are new, neat & clean,
Great location,
Close to Manda Hill, ISL & Rhodespark Mosque.
Contact me for viewings.

Features

Interior

Bedrooms	3
Bathrooms	2.5
Kitchens	1
Recep. Rooms	2
Furnished	No

Exterior

Carports / Parkings	2
Security	Yes
Pool	No