



Elvira Brentnall
+260968 336061
elvira@seeff.com

Contact **Lusaka**

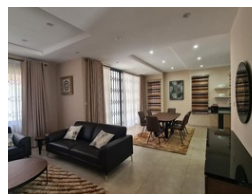
+260 954152925

Foxdale Court 114
1st Floor, Second Building
609 Zambezi Road
Roma
Lusaka
10101

FEATURED



Web Ref RL597





POA

Lease Period 12 months
Annual Escalation -

Availability Immediately

Deposit -

 3  2.5

BRAND NEW APARTMENT BLOCK

BEAUTIFUL NEW ADDITION TO RHODESPARK APARTMENTS / TOWNHOUSES.

Available unfurnished unit.

Each home is 3 bedroomed, with master bedroom en-suite and all upstairs. Living area with kitchen etc - downstairs.

Air-conditioned,

Modern finishes, spacious and stylish.

Central location, close to International School of Lusaka as well as a few hospitals.

Gym and entertainment area in the complex.

Great for embassies, missions and those who like new & modern accommodation.

Separate laundry area, private back garden,

Covered & paved parking lots.

Security 24/7

Swimming pool,

Generator - although it is reduced load shedding area,

Will let soon - contact me to book a viewing.

Features

Pets Allowed	Yes		
Interior		Exterior	
Bedrooms	3	Carports / Parkings	2
Bathrooms	2.5	Security	Yes
Kitchens	1	Pool	Yes
Recep. Rooms	2		
Furnished	No		