



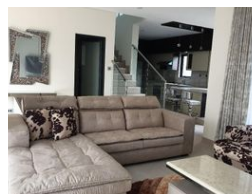
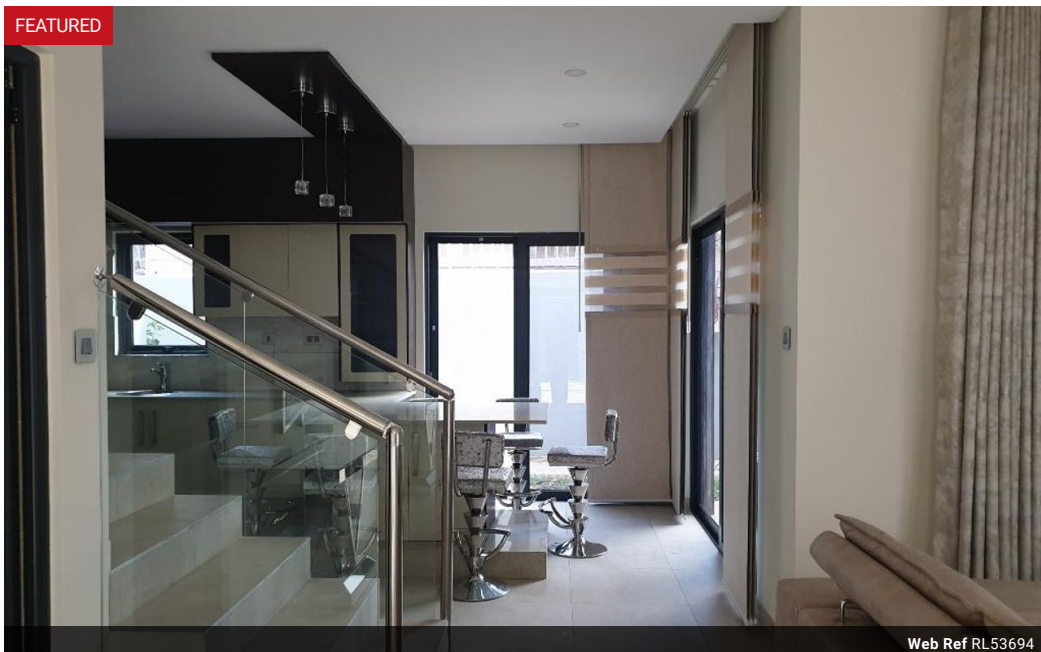
**Elvira Brentnall**  
0968 336061  
elvira@seeff.com

Contact **Lusaka**

**260 954152925**

Foxdale Court 114  
1st Floor, Second Building  
609 Zambezi Road  
Roma  
Lusaka  
10101

### FEATURED



**POA**

**Lease Period** 12 months  
**Annual Escalation** -

**Availability** Immediately

**Deposit** -

 3  3.5  2

### Beautiful New Block in The Centre Of Lusaka

These are beautifully styled terraced apartments - maisonette style.  
Super neat and modern eight units just made ready for occupation.  
In the heart of Rhodespark and walking distance from ISL & Manda Hill Shopping Mall.  
All have:  
Light & modern kitchen with caesarstone and built in appliances.  
Separate laundry and lots of cupboard space  
Beautifully furnished with quality items & appliances  
Air-conditioned throughout  
3 en-suite bedrooms upstairs with  
beautiful landing or second Tv lounge  
Bedding or soft furnishing is not included  
Upstairs bedrooms & master bedroom with XL rain shower  
Solar inverters installed for power backup  
Double carport for each  
Small patio for sitting outdoors...  
Suitable for companies, embassies, business executives...  
Call me for viewing appointment & bookings

### Features

#### Interior

Bedrooms	3
Bathrooms	3.5
Kitchens	1
Recep. Rooms	2.5
Furnished	Yes

#### Exterior

Garages	2
Security	Yes
Pool	No