

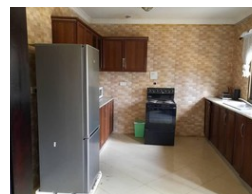


**Elvira Brentnall**  
+260968 336061  
elvira@seeff.com

Contact **Lusaka**

**+260 954152925**

Foxdale Court 114  
1st Floor, Second Building  
609 Zambezi Road  
Roma  
Lusaka  
10101



**POA**

**Lease Period** 12 months  
**Annual Escalation** -

**Availability** Immediately

**Deposit** -

 2  2

### Furnished Units Near East Park Mall

These are furnished apartments,  
Including hard furnishing and appliances.  
Each unit is having 2 bedrooms with MES and BICs.  
Double storey, spacious,  
Central location, easy access,  
5 min drive to East Park Mall,  
Contact me for viewing arrangements.

### Features

#### Interior

Bedrooms	2
Bathrooms	2
Kitchens	1
Recep. Rooms	2
Furnished	Yes

#### Exterior

Carports / Parkings	2
Security	Yes
Pool	No