



**Alick Phiri**  
0763549295  
alick.phiri@seeff.com

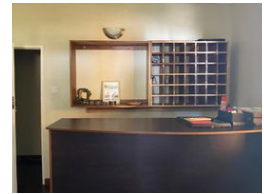
Contact **Lusaka**  
**+260 954152925**

Foxdale Court 114  
1st Floor, Second Building  
609 Zambezi Road  
Roma  
Lusaka  
10101

FEATURED



Web Ref RL1023



POA

**Lease Period** 12 months    **Availability** Immediately    **Deposit** -  
**Annual Escalation** -

6    5

### 5 bedroom with guest wing and 2 bedroom Cottage

This is a very spacious standalone House in Olympia Park suitable for both commercial and residential. It has 5 bedrooms main house, 1 bedroom guest wing and 2 bedroom cottage. Accommodation includes a 3 self contained bedrooms, 2 additional bedrooms, TV room, Lounge, Bar, Kitchen, and common bathroom.

Guest Cottage has 2 bedroom fitted with wardrobes, open plan living and dining room, kitchen and common bathroom

The property has a swimming pool, water tank, enough parking space and accessible via tarmac roads

Can be used as both Residential or Office Space

It is located near a number of amenities including Manda Hill mall, East Park mall, Foxdale court, a number of schools as well as health centres

### Features

Interior		Exterior	
Bedrooms	6	Pool	Yes
Bathrooms	5		
Recep. Rooms	2		
Studies	1		
Furnished	No		