



**Elvira Brentnall**  
+260968 336061  
elvira@seeff.com

Contact **Lusaka**

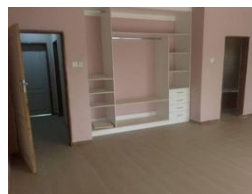
**+260 954152925**

Foxdale Court 114  
1st Floor, Second Building  
609 Zambezi Road  
Roma  
Lusaka  
10101

FEATURED



Web Ref RL838



**ZMW8,800 pm**

**Lease Period** 12 months  
**Annual Escalation** -

**Availability** Immediately

**Deposit** -

 2  2

### Spacious Two Bedroom House - Ndeke

This is a newly built home - Meanwood Ndeke Location.  
Very spacious with large bedrooms,  
Master bedroom is en-suite,  
Good size open plan kitchen & living areas,  
Large veranda - house is over 150 sqm..  
Garden,  
Water supply via council water,  
Fenced & topped with wire,  
Staff quarter,  
Solar security lights,  
Close to International Airport  
Viewing by appointment

### Features

<b>Pets Allowed</b>	Yes		
<b>Interior</b>		<b>Exterior</b>	<b>Sizes</b>
Bedrooms	2	Carports / Parkings	2
Bathrooms	2	Security	Yes
Kitchens	1	Dom. Accom.	1
Recep. Rooms	2	Pool	No
Furnished	No		
			Floor Size
			160m <sup>2</sup>