



**Elvira Brentnall**  
0968 336061  
elvira@seeff.com

Contact **Lusaka**

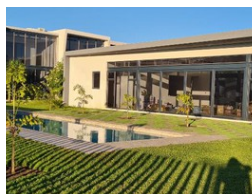
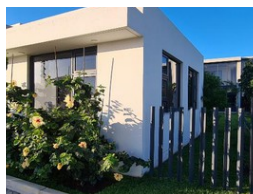
**260 954152925**

Foxdale Court 114  
1st Floor, Second Building  
609 Zambezi Road  
Roma  
Lusaka  
10101

### FEATURED



Web Ref RL764



## POA

**Lease Period** 12 months  
**Annual Escalation** -

**Availability** Immediately

**Deposit** -

2    2.5

### New & Stylish Executive Apartments

New upmarket executive apartments - modern & stylish,  
Fully furnished and serviced,  
Large windows, light & airy living - dining area,  
Double storey,  
Two bedrooms upstairs, en-suite  
Beautiful fully equipped modern kitchen,  
Secure with cameras and full access control,  
Gym & Swimming pool in the complex,  
Central location - Close to UN, ISL and Shopping Centres.  
Contact me for viewing arrangements.

### Features

#### Interior

Bedrooms	2
Bathrooms	2.5
Kitchens	1
Recep. Rooms	2
Furnished	Yes

#### Exterior

Carports / Parkings	2
Security	Yes
Pool	Yes