



Elvira Brentnall
0968 336061
elvira@seeff.com

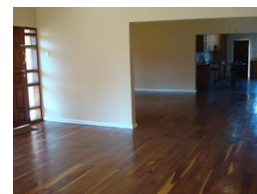
Contact **Lusaka**

260 954152925

Foxdale Court 114
1st Floor, Second Building
609 Zambezi Road
Roma
Lusaka
10101



Web Ref RL39263



POA

Lease Period 12 months
Annual Escalation -

Availability Immediately

Deposit -

 3  2  1

Two Lovely Cluster Homes - Mariandale

There are two homes available from May/ June.
Situating behind York farm with new access road.
Each is 3 bedroom with private garden and master bedroom en-suite.
Homes are neat, well kept and maintained.
Served by borehole.
Mosquito nets in place.
Gardens are landscaped and each home has a nice patio.
Walled, secure and with - separately fenced communal swimming pool.
Very spacious and well priced at \$1600 p.m
Call for viewing arrangements.

Features

Pets Allowed	Yes		
Interior		Exterior	
Bedrooms	3	Garages	1
Bathrooms	2	Carports / Parkings	1
Kitchens	1	Security	Yes
Recep. Rooms	2	Pool	Yes
Furnished	No		