



Elvira Brentnall
+260968 336061
elvira@seeff.com

Contact **Lusaka**

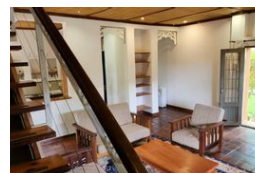
+260 954152925

Foxdale Court 114
1st Floor, Second Building
609 Zambezi Road
Roma
Lusaka
10101

FEATURED



Web Ref RL1609



POA

Lease Period 12 months
Annual Escalation -

Availability Immediately

Deposit -

3 2.5 1

Lovely Townhouse in Kabulonga

This charming double-storey stand-alone home is part of an upmarket complex of six located in the premium residential location of Kabulonga. It is situated on the main tarred road and is close to the Kabulonga shopping centre and the American Embassy. The homes in the complex are fashioned along the style of Portuguese-Swahili style homes that typically dot the East African coastline and are the first of this style to be built in Zambia.

Built to give maximum cooling inside, high bamboo-matted ceilings (3.3 m) and recessed solid wood French doors ensure good airflow. Substantial outdoor living and entertaining areas are provided both upstairs and downstairs with 28 sq m patios on both upper and lower levels.

The downstairs area is open-plan and comprises a spacious lounge separated by shelving from a dining area and open...

Features

Pets Allowed Yes

Interior

Bedrooms	3
Bathrooms	2.5
Kitchens	1
Recep. Rooms	2
Studies	0.5
Furnished	Yes

Exterior

Garages	1
Carports / Parkings	2
Security	Yes
Pool	Yes