



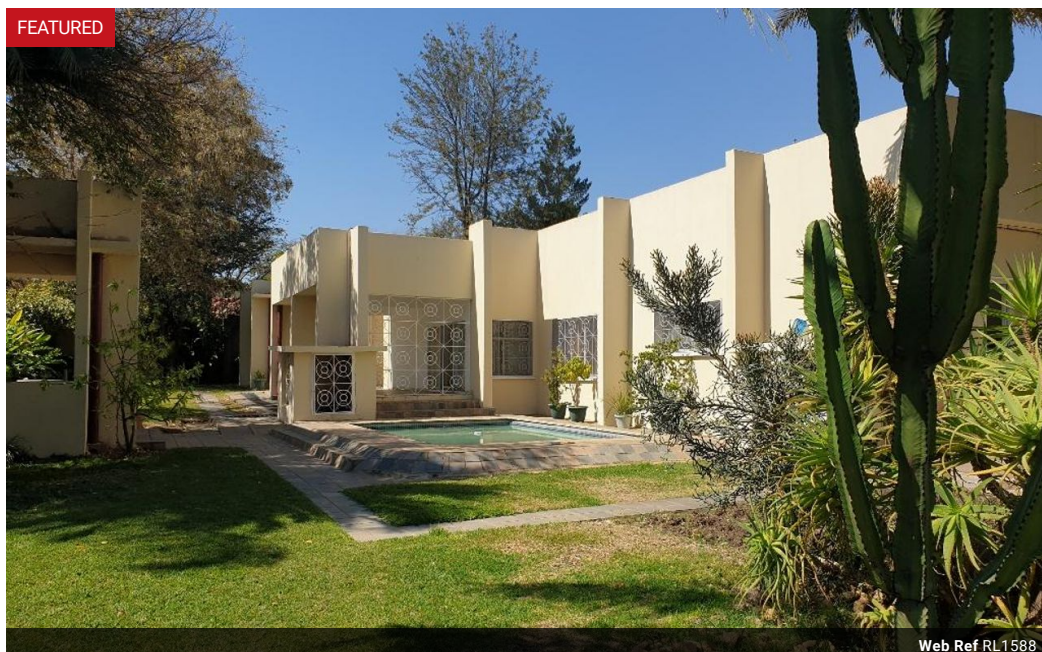
Elvira Brentnall
0968 336061
elvira@seeff.com

Contact **Lusaka**

260 954152925

Foxdale Court 114
1st Floor, Second Building
609 Zambezi Road
Roma
Lusaka
10101

FEATURED



Web Ref RL1588



POA

Lease Period 24 months
Annual Escalation -

Availability Immediately

Deposit -

 4  5  2

Executive House Jesmondine - res or comm use

Available now - residential or commercial use:

An executive house in Jesmondine with
4 spacious bedrooms, each en-suite and with walk-in closets
Reception area
Spacious fitted kitchen with large storage & separate laundry
Dining room
Sunken lounge with a large bar area
Large patios - lounge & main bedroom
Atrium with water feature
Air-conditioned
Entertainment area with swimming pool

Double garage
Lots of storage space
Big staff quarters
Fish pond
Borehole & council water supply

Features

Pets Allowed Yes

Interior

Bedrooms	4
Bathrooms	5
Kitchens	1
Recep. Rooms	3
Studies	0.5
Furnished	No

Exterior

Garages	2
Carports / Parkings	3
Security	Yes
Dom. Accom.	1.5
Pool	Yes