



Alick Phiri
0763549295
alick.phiri@seeff.com

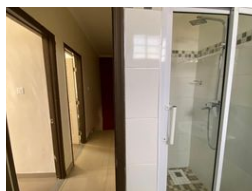
Contact **Lusaka**

260 954152925

Foxdale Court 114
1st Floor, Second Building
609 Zambezi Road
Roma
Lusaka
10101



Web Ref RL1526



ZMW18,000 pm

Lease Period 12 months
Annual Escalation -

Availability Immediately

Deposit -

2 2.5

2 bedroom double storey apartment

This is a 2 bedroom double storey apartment in Foxdale/Chamba Valley area. Accommodation includes an open plan living room, dining and kitchen, guest toilet and two self contained bedrooms with showers. The complex has 24/7 security, 24/7 backup power and borehole water ensure uninterrupted water supply. The complex also has a very spacious communal area with a swimming pool.

Situated on a gravel Road just 300m from Chamba Valley Mall and access to Zambezi Road on one side and Munali Road on the other to main amenities of Lusaka

Call for more details and viewing arrangements

Features

Interior

Bedrooms	2
Bathrooms	2.5
Recep. Rooms	2
Furnished	No

Exterior

Pool	Yes
------	-----