



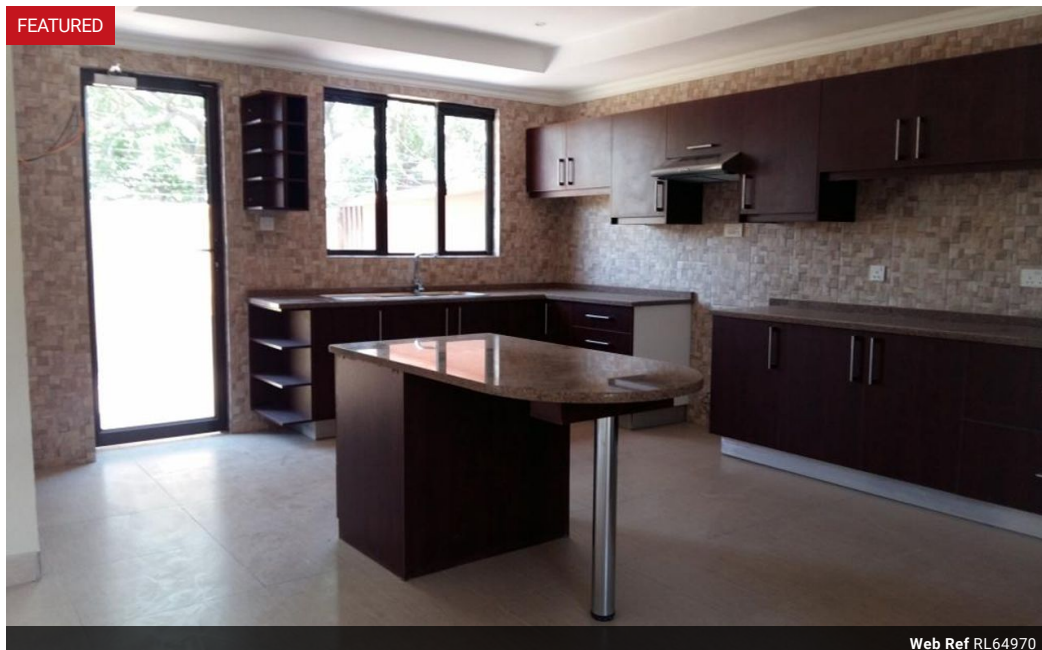
Elvira Brentnall
+260968 336061
elvira@seeff.com

Contact **Lusaka**

+260 954152925

Foxdale Court 114
1st Floor, Second Building
609 Zambezi Road
Roma
Lusaka
10101

FEATURED



Web Ref RL64970



POA

Lease Period 12 months
Annual Escalation -

Availability Immediately

Deposit -

 4  3  1

Townhouses in Jesmondine

These are very spacious double storey homes,
Situating off Central Street and not far from Munali or East Park Shopping Malls.
They are with 4 bedrooms and small office room.
Master en- suite and BICs
Large balcony upstairs.
Modern kitchens
Standby generator
Communal swimming pool
A few furnished and unfurnished units available.
Viewing by appointment.

Features

Pets Allowed	Yes		
Interior		Exterior	
Bedrooms	4	Garages	1
Bathrooms	3	Carports / Parkings	2
Kitchens	1	Security	Yes
Recep. Rooms	2	Pool	Yes
Studies	1		
Furnished	Yes		