



Alick Phiri
0763549295
alick.phiri@seeff.com



Sekani Kayela
0962818988

sekani.kayela@seeff.com

Contact **Lusaka**

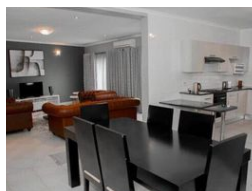
260 954152925

Foxdale Court 114
1st Floor, Second Building
609 Zambezi Road
Roma
Lusaka
10101

FEATURED



Web Ref RL1700



ZMW20,000 pm

Lease Period 12 months
Annual Escalation -

Availability Immediately

Deposit -

2 2

2 bedroom fully furnished units in Chudleigh

This is a 2 bedroom fully furnished unit located in a secure complex in Chudleigh. Accommodation includes a living room, dining, kitchen, self contained bedroom, secondary bedroom and a common bathroom and toilet. This complex is located off Central Street and magoye road and closer to amenities such as Palmwood Lodge and Zesco Chudleigh regional Office, roughly 2.5km off Great East Road and 5.5km from East Park Mall.
Price: ZMW20,000

Features

Interior

Bedrooms	2
Bathrooms	2
Recep. Rooms	2
Furnished	Yes

Exterior

Pool	Yes
------	-----