



**Mwila Sheila Mulundika**  
0979459259  
mwila.mulundika@seeff.com

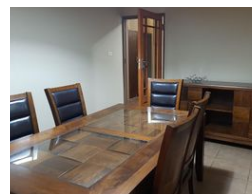
Contact **Lusaka**

**260 954152925**

Foxdale Court 114  
1st Floor, Second Building  
609 Zambezi Road  
Roma  
Lusaka  
10101



Web Ref RL942



**ZMW45,000 pm**

**Lease Period** Negotiable  
**Annual Escalation** -

**Availability** Immediately

**Deposit** -

4 3.5 2

### IDEAL EXECUTIVE PROPERTY FOR RENT

Upmarket Executive house in a stellar location of Kitwe, well secured with trellidor retractable gates, surrounded by well maintained gardens, enclosed in a wall fence with electric fencing & (2) automated gates. The property is fully furnished with 4 bedrooms, 3 bedrooms en-suite, 1 bathroom, lounge, dining area, TV room, kitchen with in-built stove/oven, patio, swimming pool with entertainment area/bar, laundry room, genset and a water tank with borehole

Rental Price: \$2,500 (negotiable)

### Features

#### Interior

Bedrooms	4
Bathrooms	3.5
Kitchens	1
Recep. Rooms	2
Furnished	Yes

#### Exterior

Garages	2
Security	Yes
Dom. Accom.	1
Pool	Yes