



Kelvin Mwansa
+260 969 627 085
kelvin.mwansa@seeff.com

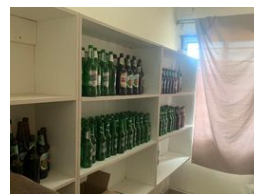
Contact **Lusaka**

+260 954152925

Foxdale Court 114
1st Floor, Second Building
609 Zambezi Road
Roma
Lusaka
10101



Web Ref RL1190



ZMW860,000

 3  2  2

Monthly Bond Repayment ZMW8,730.97

Calculated over 20 years at 10.75% with no deposit.

Transfer Costs ZMW28,244.00 **Bond Costs** ZMW21,450.00

These calculations are only a guide. Please ask your conveyancer for exact calculations.

RESIDENTIAL PROPERTY FOR SALE

Located in the heart of Siavonga within Natinangala Area about 2.5 kilometres from the tarred Siavonga Road and approximately 5 kilometres from Siavonga Commercial Area.

The property has a land extent of 1176 (45.24 x 26.14) and is developed with the main house comprising of a spacious master ensuite bedroom, two additional bedrooms, an open concept living, kitchen and dining areas, laundry, pantry and a garage with parking space for two vehicles. The property is additionally developed with a one bedroom servant's quarter.

Well secured as the property is secured in a concrete block wall.

Asking price is ZMW 860,000.

Call for more information and viewing arrangements!

Features

Pets Allowed	Yes				
Interior		Exterior		Sizes	
Bedrooms	3	Garages	2	Land Size	1,176m²
Bathrooms	2	Dom. Accom.	1		
Recep. Rooms	2	Pool	No		