



Alick Phiri
0763549295
alick.phiri@seeff.com

Contact Lusaka

260 954152925

Foxdale Court 114
1st Floor, Second Building
609 Zambezi Road
Roma
Lusaka
10101

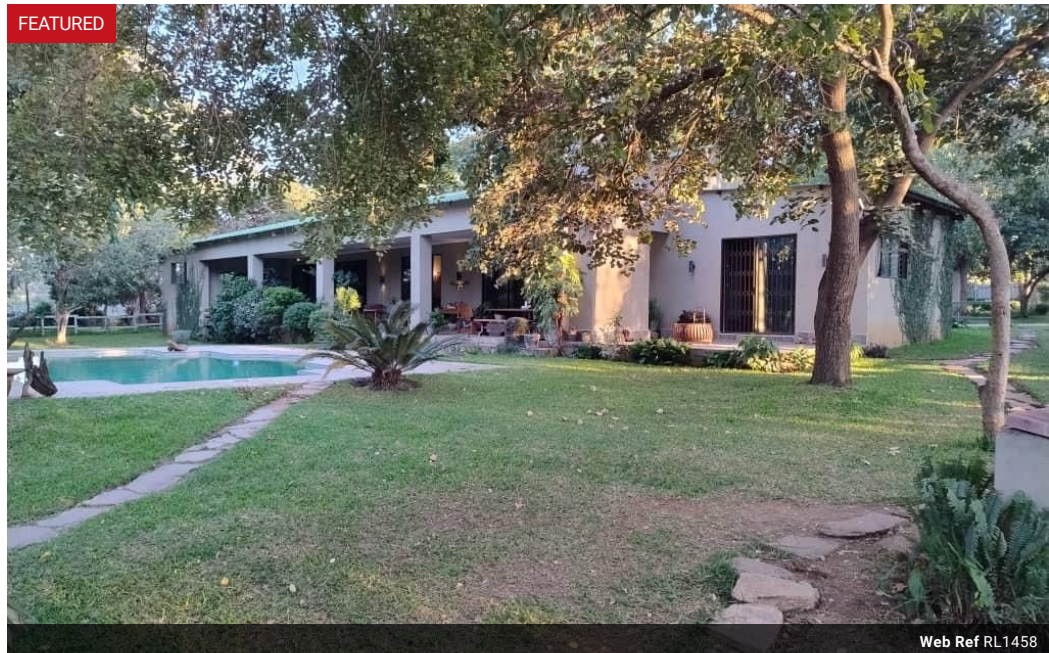
Make an Offer

Market value
ZMW20,000,000

Offers from
ZMW15,000,000

Offers for this listing must be made in
ZMW1,000,000 increments

FEATURED



Web Ref RL1458



ZMW20,000,000

Monthly Bond Repayment ZMW203,045.79

Calculated over 20 years at 10.75% with no deposit.

Transfer Costs ZMW2,272,371.00 Bond Costs ZMW132,285.00

These calculations are only a guide. Please ask your conveyancer for exact calculations.

11 7 2

Unparalleled Living: Your Oasis Awaits in State Lodge, Lusaka!

Introducing a luxurious small holding estate nestled in the heart of State Lodge, Lusaka! This remarkable property boasts 5 acres of prime land, with road frontage and not just one, but two gates for convenient access.

The centerpiece is a stunning 5-bedroom main house sprawling over approximately 580sqm, featuring an array of amenities for unparalleled comfort and entertainment. From the bar entertainment area to the spacious lounge, every corner exudes elegance and sophistication.

Outside, enjoy the serenity of the veranda with a built-in braai overlooking the sparkling swimming pool and dedicated bar area. For the equestrian enthusiast, there are stables for 6 horses, ensuring every passion is catered to.

The property also includes a charming cottage made from innovative sandbag materials, offering a cozy retreat...

Features

Pets Allowed	Yes		
Interior		Exterior	
Bedrooms	11	Garages	2
Bathrooms	7	Security	No
Recep. Rooms	6	Dom. Accom.	1
Studies	1	Pool	Yes
Furnished	No		