



Alick Phiri
0763549295
alick.phiri@seeff.com



Sekani Kayela
0962818988

sekani.kayela@seeff.com

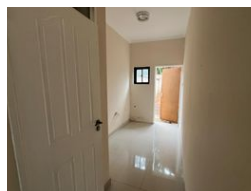
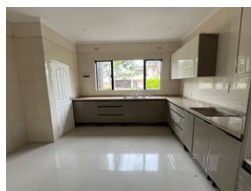
Contact **Lusaka**

260 954152925

Foxdale Court 114
1st Floor, Second Building
609 Zambezi Road
Roma
Lusaka
10101



Web Ref RL1654



ZMW20,000,000

Monthly Bond Repayment ZMW203,045.79

Calculated over 20 years at 10.75% with no deposit.

Transfer Costs ZMW2,272,371.00 **Bond Costs** ZMW132,285.00

These calculations are only a guide. Please ask your conveyancer for exact calculations.

24 16 8

Complex of 8 units of 3 bedroom double storey flats in State Lodge

This is a complex of 4 identicle semi-detached blocks of units. Each block has two double storey flats with the following accommodation;

- Living room
- 3 bedrooms - all on the first floor; master ensuite
- Kitchen with pantry and sculler
- store room
- Garage

All units have a private backyards and land is slightly over 2 acres.

The complex is located on a tarred road, approximately 400 metres from the leopards hill road.

Additional Notes: Some units still need some final touches to be complete

Price: USD700,000

Features

Interior

Bedrooms	24
Bathrooms	16
Recep. Rooms	16

Exterior

Garages	8
Pool	No