



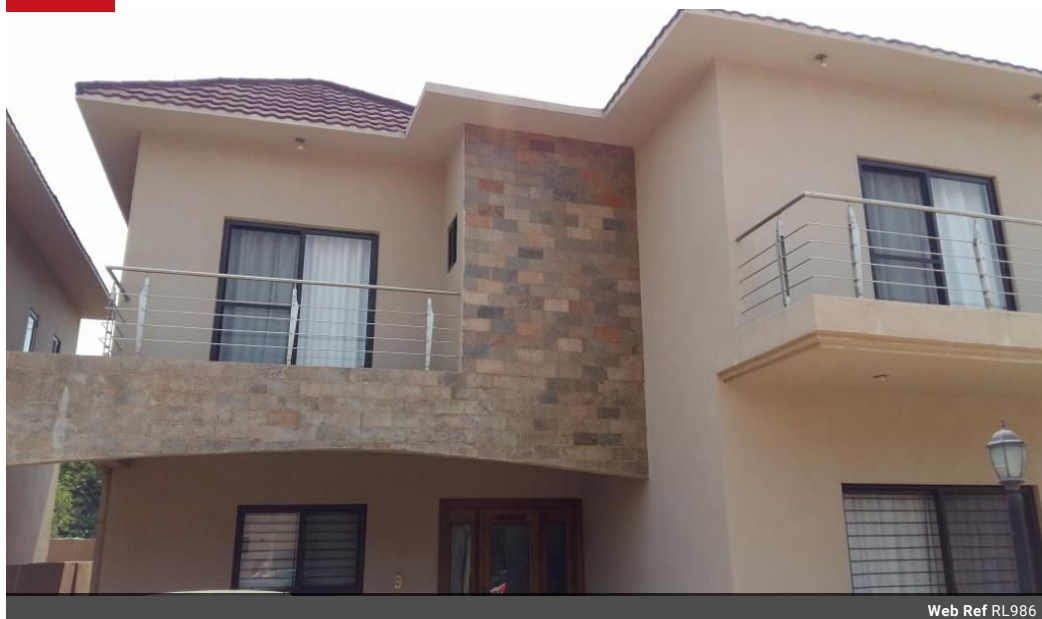
Elvira Brentnall
0968 336061
elvira@seeff.com

Contact **Lusaka**

260 954152925

Foxdale Court 114
1st Floor, Second Building
609 Zambezi Road
Roma
Lusaka
10101

FEATURED



Web Ref RL986



POA

3 3.5 1

Modern Townhouse - Roma

This is a double storey townhouse in Roma, Roma has within its vicinity: LICs, BIPS, Foxdale Court, Victoria Hospital, East Park Mall etc. Zambezi Park - complex.
House consists of 3 bedrooms - all en-suite with balconies.
Upper floor has linen cupboard, small storage room and landing.
Ground floor is open plan kitchen, dining, living rooms as well as visitors toilet, lower level
The building has a maids room at the back with the bathroom or a utility room.
It is fairly new build and attractive & secure location for rentals.
Asking Price is 200 000 USD.
Contact the listing agent for viewing arrangements.

Features

Pets Allowed	Yes		
Interior		Exterior	
Bedrooms	3	Garages	1
Bathrooms	3.5	Carports / Parkings	1
Kitchens	1	Security	Yes
Recep. Rooms	2	Dom. Accom.	1
Furnished	No	Pool	No
		Sizes	
		Floor Size	180m ²
		Land Size	400m ²