



Alick Phiri
0763549295
alick.phiri@seeff.com



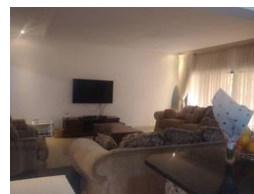
Lusungu Kayela
0977230228

lusungu.kayela@seeff.com

Contact **Lusaka**

260 954152925

Foxdale Court 114
1st Floor, Second Building
609 Zambezi Road
Roma
Lusaka
10101



ZMW7,500,000

6 6

Monthly Bond Repayment ZMW76,142.17

Calculated over 20 years at 10.75% with no deposit.

Transfer Costs ZMW694,228.00 **Bond Costs** ZMW75,285.00

These calculations are only a guide. Please ask your conveyancer for exact calculations.

Standalone 5 bedroom house and 1 bedroom workers quarter in Roma Park

This is 5 bedroom standalone house in Roma Park. This includes an ensuit main bedroom, 2 more self contained bedroom and 1 additional bedroom. The house also has a self contained guest bedroom. Additional accommodation includes Lounge, Kitchen, pantry, guest living room, common bathroom and toilet.

The House also has a self contained workers quarter which has a living room, Kitchen, bedroom and shower.

It is located in Roma Park Close to a number of amenities including East Park mall, arcades, Roma Girls School, Lics school among others

Asking Price: \$390,000

Contact for more details and viewing appointments

Features

Interior		Exterior		Sizes	
Bedrooms	6	Pool	No	Land Size	1,350m ²
Bathrooms	6				
Recep. Rooms	3				
Furnished	No				