



Alick Phiri
0763549295
alick.phiri@seeff.com

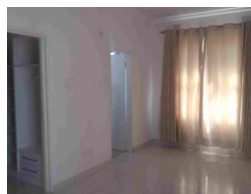
Contact **Lusaka**
+260 954152925

Foxdale Court 114
1st Floor, Second Building
609 Zambezi Road
Roma
Lusaka
10101

FEATURED



Web Ref RL1051



ZMW2,200,000

3 2.5

Monthly Bond Repayment ZMW22,708.14
Calculated over 20 years at 11% with no deposit.

Transfer Costs ZMW89,947.00 **Bond Costs** ZMW34,625.00
These calculations are only a guide. Please ask your conveyancer for exact calculations.

3 bedroom flat in Roma Park

This is a 3 bedroom flat located in Roma Park. Accommodation includes a master self contained bedroom, 2 more bedrooms, common bathroom, guest toilet, spacious open plan kitchen, dining and lounge.

The flat has a small backyard and has well maintained lawns. flat is well located and short drive away from the Roma Park entrance and close to the social areas of Roma Park such as retreat and the tennis court.

Call for more details and viewing arrangements

Features

Interior		Exterior	
Bedrooms	3	Pool	No
Bathrooms	2.5		
Recep. Rooms	2		
Furnished	No		