



Kelvin Mwansa
+260 969 627 085
kelvin.mwansa@seeff.com

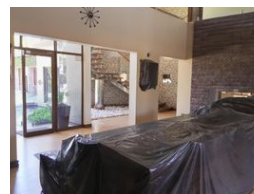
Contact **Lusaka**

+260 954152925

Foxdale Court 114
1st Floor, Second Building
609 Zambezi Road
Roma
Lusaka
10101



Web Ref RL1268



POA

 6  6  3

FURNISHED MODERN DOUBLE STOREY HOUSE

This is located in Rhodespark area in proximity to social amenities such as Manda Hill, The Mosque, International School of Lusaka etc. The property is developed with a double storey modern house, cottage, garage with 3 parking space and a swimming pool. The main house boasts of 6 bedrooms, 5 of which are ensuite, living area, TV room, kitchen with a pantry, scullery, entertainment/play area, prayer room and a guest toilet. The property comes with a fish pond at the entrance. The property has a land extent of 2452 square metres (36.50 x 67.06) with well maintained lawns.

Offers are welcome!!!

Get in touch for further details and viewing arrangement!

Features

Interior

Bedrooms	6
Bathrooms	6
Recep. Rooms	2

Exterior

Garages	3
Dom. Accom.	1
Pool	Yes