



Elvira Brentnall
0968 336061
elvira@seeff.com

Contact **Lusaka**

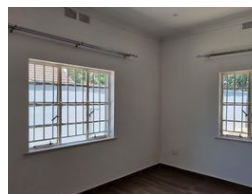
260 954152925

Foxdale Court 114
1st Floor, Second Building
609 Zambezi Road
Roma
Lusaka
10101

FEATURED



Web Ref RL905



POA

 11  6

New Apartment Block - Northmead

This is all new units and one fully refurbished unit - situated in Northmead area - not too far from Coptic Hospital and Makishi junction.

Complex comprises of 4 x 2 bedroom units with one bathroom each and a 3 bedroom unit with master en-suite.

All homes are new, tiled throughout with built in wardrobes.

Modern kitchen units as well as bathrooms.

Each unit has a solar geyser and water from the borehole via large reservoir tank.

Front of the houses is all paved with covered parking, to be completed soon.

Very neat and suitable for company employees or smaller families.

Altogether 5 units, central location, secure with guard room as well as changing rooms & shower for staff.

Asking price is USD 400 000

Viewing by appointment.

Features

Pets Allowed Yes

Interior

Bedrooms	11
Bathrooms	6
Kitchens	5
Recep. Rooms	10
Furnished	No

Exterior

Carports / Parkings	10
Security	Yes
Dom. Accom.	0.5
Pool	No

Sizes

Floor Size	700m ²
Land Size	1,600m ²