



**Elvira Brentnall**  
+260968 336061  
elvira@seeff.com

Contact **Lusaka**

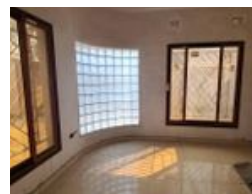
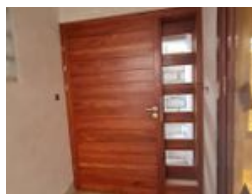
**+260 954152925**

Foxdale Court 114  
1st Floor, Second Building  
609 Zambezi Road  
Roma  
Lusaka  
10101


FEATURED



Web Ref RL880



POA

 4  4

### Mostly complete Home - Massmedia

This is a newly built home with only finishes left to be done.  
Very central location - situated close to East Park Mall, on a 1500 sqm plot, wall fenced, secure.  
Single storey, four bedrooms, four bathrooms,  
Small courtyard between the living area and the rooms,  
Half of the plot is available for landscaping or a swimming pool.  
Water supply via Council.  
House is well built, off Thabo Mbeki Road and in the vicinity of International School of Lusaka.  
Viewing by appointment.

### Features

<b>Pets Allowed</b>	Yes		
<b>Interior</b>		<b>Exterior</b>	<b>Sizes</b>
Bedrooms	4	Carports / Parkings	3
Bathrooms	4	Security	Yes
Kitchens	1	Dom. Accom.	1
Recep. Rooms	2.5	Pool	No
Furnished	No		
			Floor Size
			Land Size
			400m <sup>2</sup>
			1,500m <sup>2</sup>