



Elvira Brentnall
0968 336061
elvira@seeff.com

Contact Lusaka

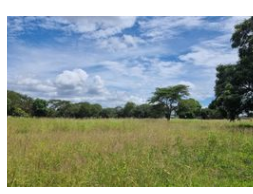
260 954152925

Foxdale Court 114
1st Floor, Second Building
609 Zambezi Road
Roma
Lusaka
10101

FEATURED



Web Ref RL1233



ZMW600,000

Monthly Bond Repayment ZMW6,091.37

Calculated over 20 years at 10.75% with no deposit.

Transfer Costs ZMW21,217.00 **Bond Costs** ZMW15,795.00

These calculations are only a guide. Please ask your conveyancer for exact calculations.

Makeni - 5 Plots on the Farm

Selling now:

This is a subdivision of the Farm plot in Makeni, just off Makeni Road, with Private access road. The area is with large trees and attractive for a new home owner.

Available are:

5 plots, four are measuring 30 x 20 metres in size and the 5th one is 35 x 20

Price for each 30x20 plot is K 600 000.

and 35 x 20 is at K 450 000.

One could buy a few plots if bigger land required

Dedicated access road provision.

Survey diagrams are approved,

Contact me for viewing & bookings.

Features