

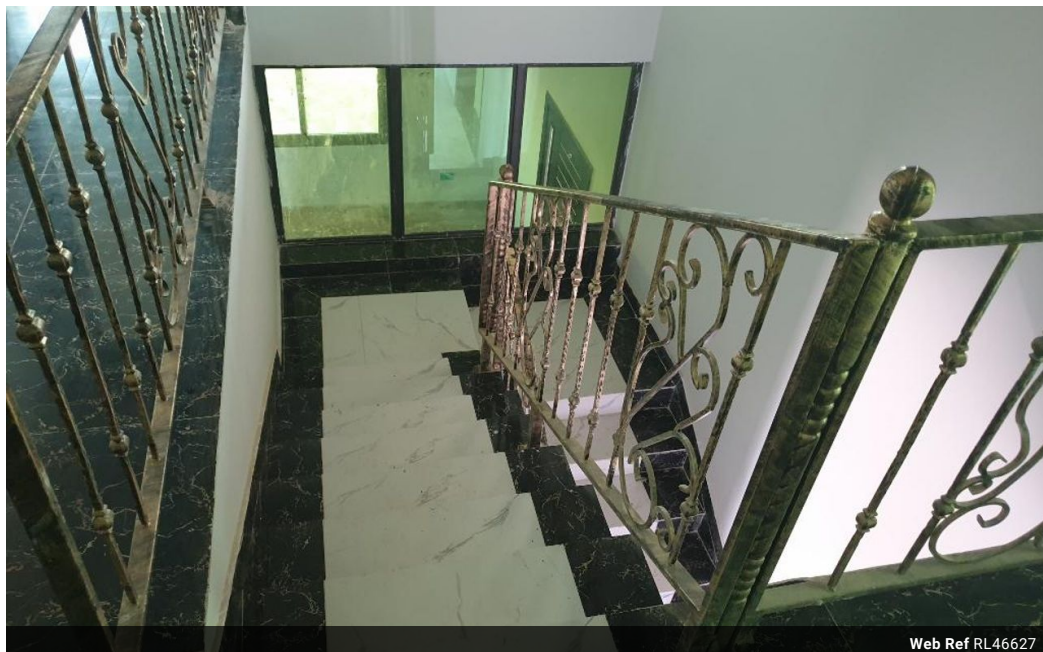


Elvira Brentnall
+260968 336061
elvira@seeff.com

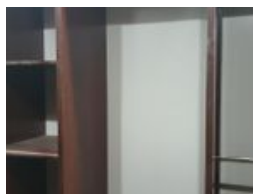
Contact **Lusaka**

+260 954152925

Foxdale Court 114
1st Floor, Second Building
609 Zambezi Road
Roma
Lusaka
10101



Web Ref RL46627



POA

 5  3

New Cluster Houses - York Farm Area

This is a new development.
Consists of 12 double storey houses with 5 bedrooms each.
Individual house size is 315 sqm and on 550 sqm lot
They are spacious with modern kitchens & bathrooms
Solid wood doors, quality fittings.
Swimming pool - Communal
Located just couple hundreds metres off Kafue Road.
Contact me.

Features

Pets Allowed	Yes				
Interior		Exterior		Sizes	
Bedrooms	5	Carports / Parkings	2	Floor Size	315m²
Bathrooms	3	Security	Yes	Land Size	550m²
Kitchens	1	Pool	No		
Recep. Rooms	2				
Studies	1				
Furnished	No				