



Alick Phiri
0763549295
alick.phiri@seeff.com



Bryan Mushota Tembo
+260966767405

bryan.mushota@seeff.com

Contact **Lusaka**

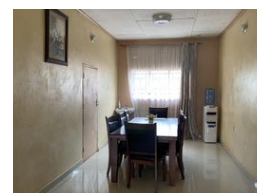
260 954152925

Foxdale Court 114
1st Floor, Second Building
609 Zambezi Road
Roma
Lusaka
10101

FEATURED



Web Ref RL1199



ZMW4,000,000

11 8

Monthly Bond Repayment ZMW40,609.16

Calculated over 20 years at 10.75% with no deposit.

Transfer Costs ZMW281,050.00 **Bond Costs** ZMW51,610.00

These calculations are only a guide. Please ask your conveyancer for exact calculations.

Investment complex property in Libala South

This complex in contains a number 2 bedroom semi detached, 3 bedroom semi detached and 1 bedroom flat.

2 bedroom semi detached:

Each flat has a self contained bedroom, another bedroom, kitchen, dining living room and common bathroom.

3 bedroom semi detached:

One side is 3 bedroom with two self contained while the other is 3 bedroom with 1 master self contained. Other accommodation for both include a living room, dining, kitchen and common bathrooms

1 bedroom flat:

Accommodation includes the bedroom, open plan living and dining room, kitchen and common bathroom.

It is located in Libala South near yellow shop. Other amenities include choppies Chalala and a number of shops close to the area

Features

Interior

Bedrooms	11
Bathrooms	8
Kitchens	5
Recep. Rooms	10
Furnished	No

Exterior

Pool	No
------	----