

### FEATURED



**Elvira Brentnall**  
+260968 336061  
elvira@seeff.com

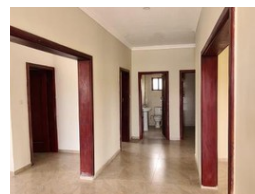
Contact **Lusaka**

**+260 954152925**

Foxdale Court 114  
1st Floor, Second Building  
609 Zambezi Road  
Roma  
Lusaka  
10101



Web Ref RL694



**ZMW3,500,000**

2 1

**Monthly Bond Repayment** ZMW36,126.59

Calculated over 20 years at 11% with no deposit.

**Transfer Costs** ZMW221,714.00 **Bond Costs** ZMW47,840.00

These calculations are only a guide. Please ask your conveyancer for exact calculations.

### Two Bedroom house - Ibex

The house is situated in a private fenced yard, within the gated community development. Easy access from Twin Palm Rd. The plot size is 1620 sqm and house is a two bedroom solid home about 125 sqm size, one bathroom and one toilet, Kitchen with space for dining, pantry, Open plan lounge / tv room, Mosquito nets all around, Electric fence, Gate is not automated but motor can be easily installed. Guard house/ sq, Staff ablution, Asking price is 175 000 USD. Contact me for viewing arrangements.

### Features

<b>Pets Allowed</b>	Yes		
<b>Interior</b>		<b>Exterior</b>	
Bedrooms	2	Carports / Parkings	4
Bathrooms	1	Security	Yes
Kitchens	1	Dom. Accom.	0.5
Recep. Rooms	1.5	Pool	No
Furnished	No		
		<b>Sizes</b>	
		Floor Size	125m <sup>2</sup>
		Land Size	1,620m <sup>2</sup>