



Mwila Nakazwe
+260 973251706
mwila@seeff.com

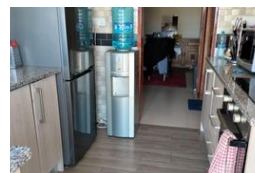
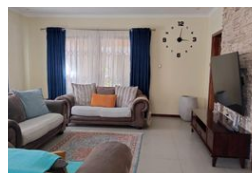
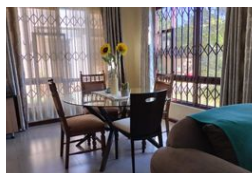
Contact **Lusaka**

+260 954152925

Foxdale Court 114
1st Floor, Second Building
609 Zambezi Road
Roma
Lusaka
10101



Web Ref RL1525



ZMW3,700,000

 4  3

Monthly Bond Repayment ZMW37,563.47

Calculated over 20 years at 10.75% with no deposit.

Transfer Costs ZMW245,882.00 **Bond Costs** ZMW49,725.00

These calculations are only a guide. Please ask your conveyancer for exact calculations.

4 Bedroom Stand alone House For Sale in Ibex Proximity To Spectra Filling Station

4 Bedroom stand alone house for sale on plot size of 1400sqm. Proximity to many amenities , shopping malls, filling stations etc. Call now for more details.

Features

Interior		Exterior		Sizes	
Bedrooms	4	Pool	No	Land Size	1,400m²
Bathrooms	3				
Recep. Rooms	2				
Furnished	No				