



Mwila Nakazwe
+260 973251706
mwila@seeff.com



Kelvin Mwansa
+260 969 627 085

kelvin.mwansa@seeff.com

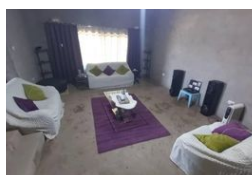
Contact **Lusaka**

+260 954152925

Foxdale Court 114
1st Floor, Second Building
609 Zambezi Road
Roma
Lusaka
10101



Web Ref RL1595



ZMW2,950,000

4 2.5 1

Monthly Bond Repayment ZMW29,949.25

Calculated over 20 years at 10.75% with no deposit.

Transfer Costs ZMW156,055.00 **Bond Costs** ZMW42,185.00

These calculations are only a guide. Please ask your conveyancer for exact calculations.

Incomplete 4 bedroom House For Sale Near Little Panda Foxdale Chamba Valley

This is an incomplete 4 bedroom house on a 60x40 (2400sqm) plot with room for further development. Proximity to Little Panda School and Cheers Super Market, and other amenities just under 1km from tarred road. Call now for more details and viewing.

Features

Pets Allowed Yes

Interior

Bedrooms 4
Bathrooms 2.5
Recep. Rooms 2

Exterior

Garages 1
Pool No