



**Kelvin Mwansa**  
+260 969 627 085  
kelvin.mwansa@seeff.com

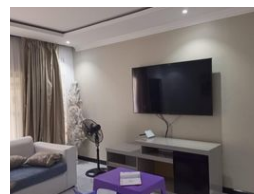
Contact **Lusaka**

**+260 954152925**

Foxdale Court 114  
1st Floor, Second Building  
609 Zambezi Road  
Roma  
Lusaka  
10101



Web Ref RL1445



**ZMW4,000,000**

 3  2

**Monthly Bond Repayment** ZMW41,287.54

Calculated over 20 years at 11% with no deposit.

**Transfer Costs** ZMW281,050.00 **Bond Costs** ZMW51,610.00

These calculations are only a guide. Please ask your conveyancer for exact calculations.

### CHARMING RESIDENTIAL PROPERTY FOR SALE IN FOXDALE

This is located in Foxdale Area about 15 minutes' drive to Foxdale Mall, Lusaka International Community School, British International School and other social amenities.

#### KEY FEATURES:-

Good sized plot with an extent of 2,526 squares metres with adequate space for additional developments.

Developed with a block of semi detached 3 bedroom flats (one flat is a shell), detached office and a guard house;

The site is enclosed in a block wall fence to all perimeter boundaries;

There is a borehole with 5,000 Litres PVC Tank;

Paved driveway and parking areas.

Don't miss this opportunity to own a beautiful property in one of the city's sought-after communities.

Call today for more details and viewing arrangements!

### Features

#### Interior

Bedrooms	3
Bathrooms	2
Recep. Rooms	2

#### Exterior

Pool	No
------	----