

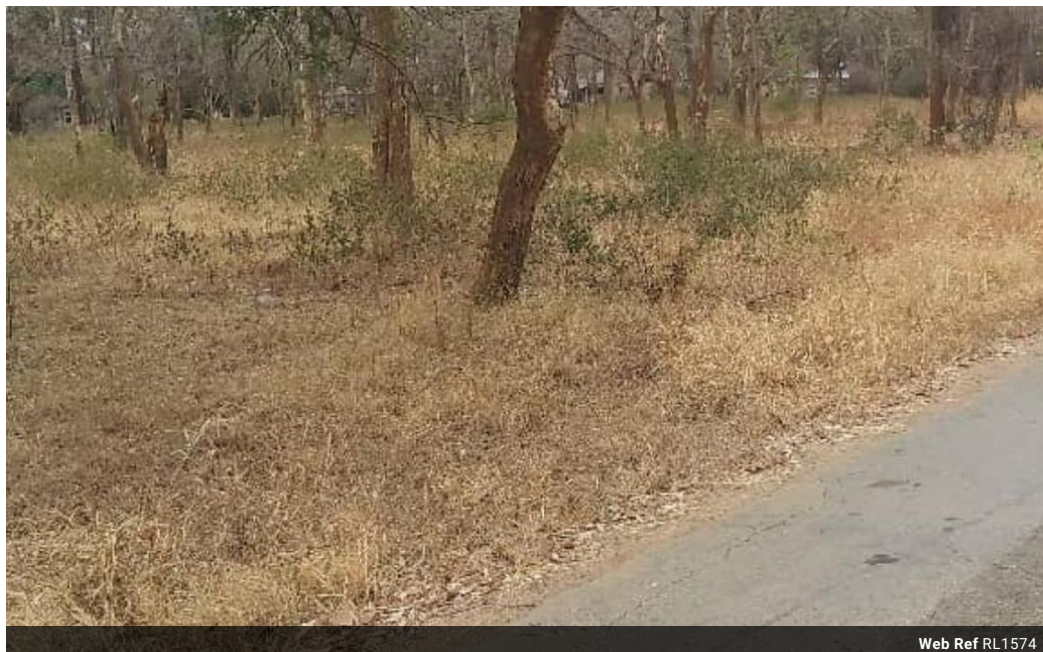


Mwila Nakazwe
+260 973251706
mwila@seeff.com

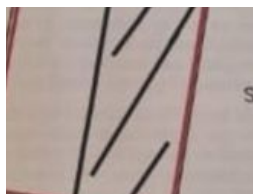
Contact **Lusaka**

+260 954152925

Foxdale Court 114
1st Floor, Second Building
609 Zambezi Road
Roma
Lusaka
10101



Web Ref RL1574



POA

1.25 Acre (5520sqm) Subdivision Prime Residential Land For Sale In Eureka Park- Road Frontage

This is a prime residential plot of 1.3 acres with road frontage being subdivided from 2.5 acre plot. Located in prime and serene area of Eureka Park. Option of buying entire 2.5 acre plot available at \$380,000. Asking price \$190,000 for 1.25 acres upfront payment, \$210,000 with payment plan of up to 6 months. Call now for viewing appointment and more details.

Features