



Elvira Brentnall
0968 336061
elvira@seeff.com

Contact Lusaka

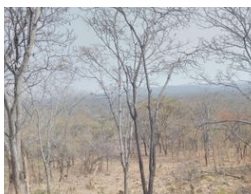
260 954152925

Foxdale Court 114
1st Floor, Second Building
609 Zambezi Road
Roma
Lusaka
10101

FEATURED



Web Ref RL1348



ZMW1,300,000

Monthly Bond Repayment ZMW13,197.98

Calculated over 20 years at 10.75% with no deposit.

Transfer Costs ZMW37,617.00 **Bond Costs** ZMW27,105.00

These calculations are only a guide. Please ask your conveyancer for exact calculations.

Beautiful Land In Shimabala

Selling now:

Beautiful peace of land, just under 5 Ha,
Situated in a Shimabala area, south of Lusaka.
The land is on a slight slope, offering beautiful distant views
and an ideal site for a dream home or a home away from home...
It is not too far from Lusaka nor Kafue...
Land is abundant in indigenous trees and has a water supply via borehole, already on site..
Selling only at K1.3m
Call today for more info and offers.

Features