

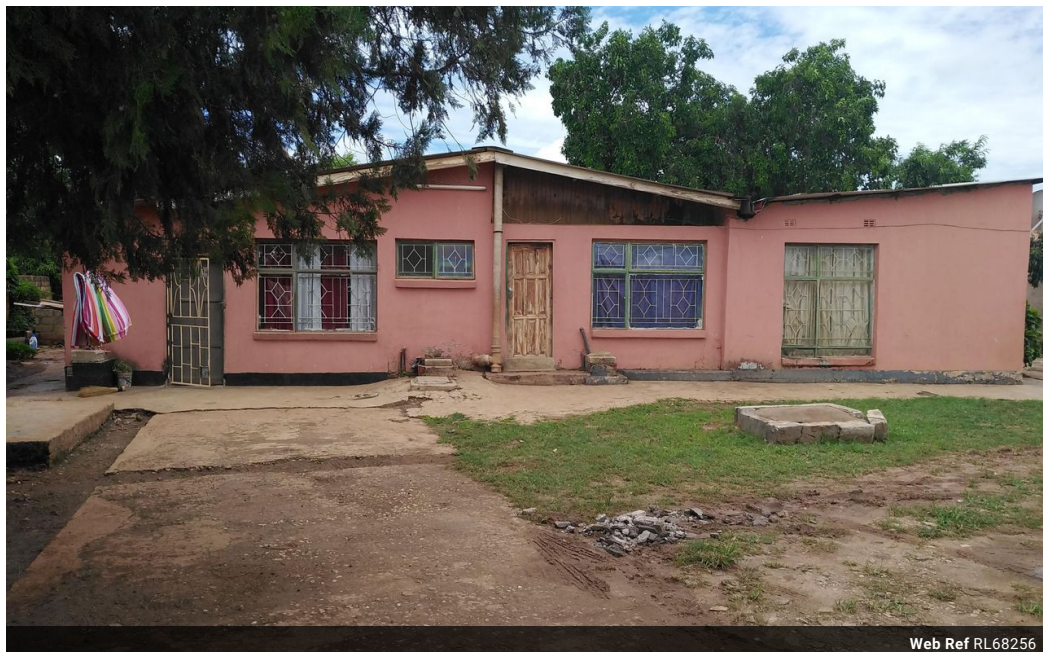


Kelvin Mwansa
+260 969 627 085
kelvin.mwansa@seeff.com

Contact **Lusaka**

+260 954152925

Foxdale Court 114
1st Floor, Second Building
609 Zambezi Road
Roma
Lusaka
10101



Web Ref RL68256



POA

 4  4  2

Residential Property

Buy this residential property with potential for redevelopment. Good location on Simon Mwansa Kapwepwe Road not too far from Twin Palm Mall. The property has a land extent of 1500 square metres developed with 4 detached houses and a storeroom currently occupied by multiple tenants. Asking price is K1 500 000. Call for more details and viewing arrangements.

Features

Interior

| | |
|--------------|-----|
| Bedrooms | 4 |
| Bathrooms | 4 |
| Recep. Rooms | 5.5 |

Exterior

| | |
|-------------|----|
| Garages | 2 |
| Dom. Accom. | 1 |
| Pool | No |