



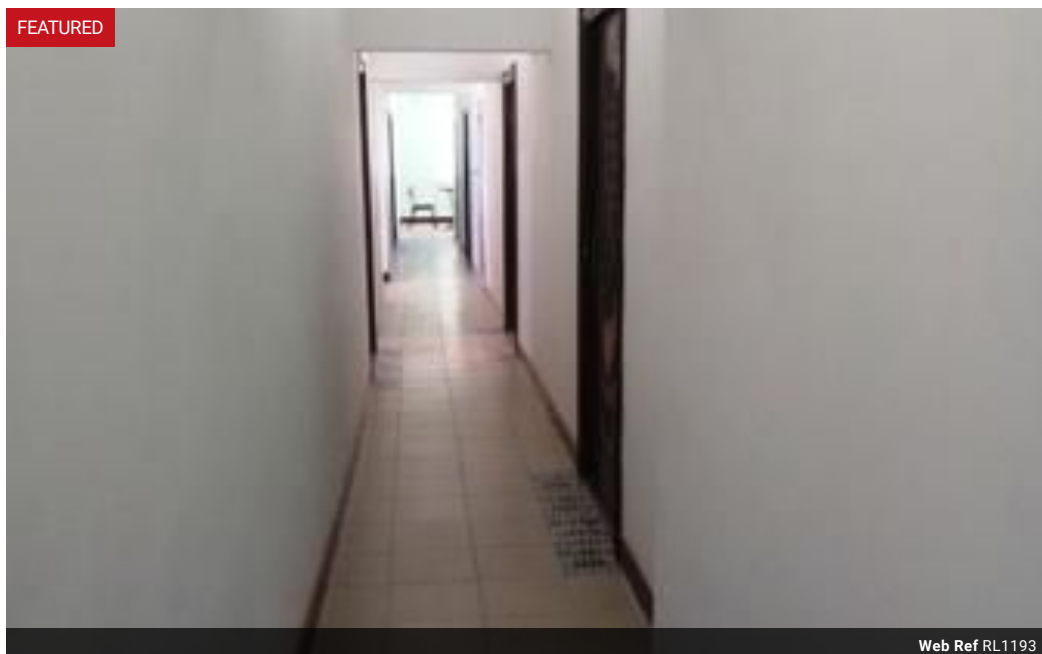
**Mwila Sheila Mulundika**  
0979459259  
mwila.mulundika@seeff.com

Contact **Lusaka**

**260 954152925**

Foxdale Court 114  
1st Floor, Second Building  
609 Zambezi Road  
Roma  
Lusaka  
10101

FEATURED



Web Ref RL1193



**ZMW11,900,000**

8 8

**Monthly Bond Repayment** ZMW118,807.21

Calculated over 20 years at 10.5% with no deposit.

**Transfer Costs** ZMW1,201,573.00 **Bond Costs** ZMW94,285.00

These calculations are only a guide. Please ask your conveyancer for exact calculations.

### LODGE FOR SALE

The Lodge is situated in a good area of Kitwe on a 2,768 plot surrounded by a wall fence and approximately 5mins drive from Kitwe CBD. The property includes the following:-

- \* 8 en-suite guest rooms
- \* a reception area
- \* a kitchen in the main building
- \* a warehouse outside approximately 700sqm
- \* a borehole with a 5,000L water tank
- \* Manager's accommodation (en-suite)
- \* spacious area outside for parking

Sale price: \$700,000 negotiable

\* Please note that the sale price includes all beds, fridges, TVs, etc

### Features

#### Interior

Bedrooms	8
Bathrooms	8
Kitchens	1
Recep. Rooms	1
Furnished	Yes

#### Exterior

Security	Yes
Pool	No

#### Sizes

Land Size	2,768m²
-----------	---------