



**Lusungu Kayela**  
0977230228  
lusungu.kayela@seeff.com

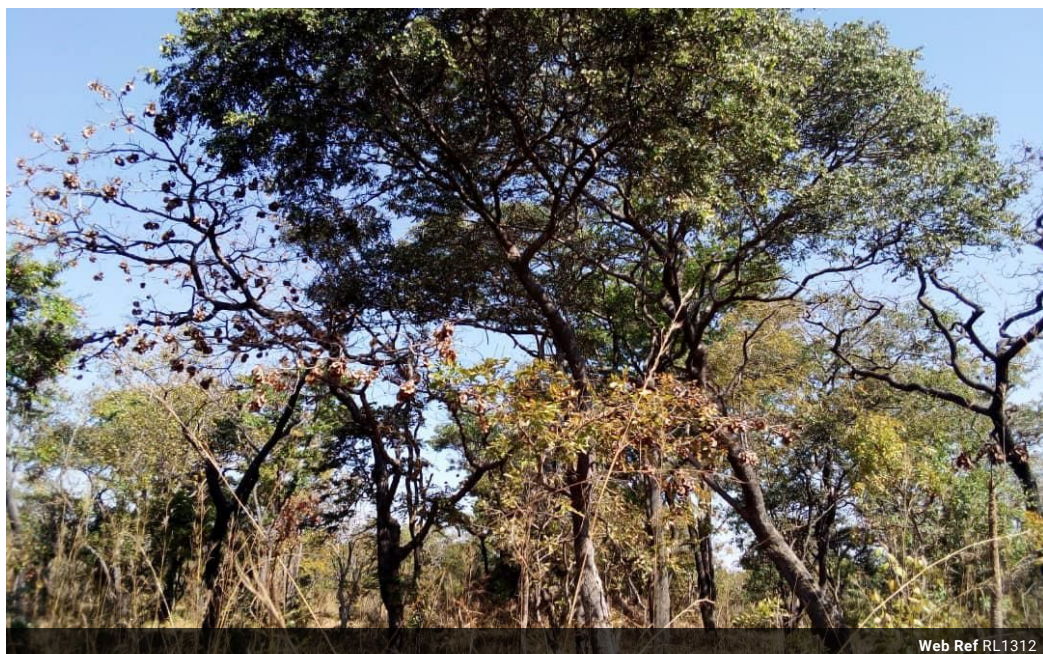


**Elvira Brentnall**  
0968 336061  
elvira@seeff.com

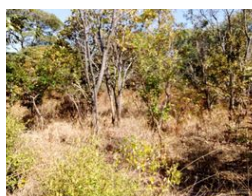
Contact **Lusaka**

260 954152925

Foxdale Court 114  
1st Floor, Second Building  
609 Zambezi Road  
Roma  
Lusaka  
10101



Web Ref RL1312



**ZMW1,500,000**



0



0

**Monthly Bond Repayment** ZMW15,228.43

Calculated over 20 years at 10.75% with no deposit.

**Transfer Costs** ZMW45,785.00 **Bond Costs** ZMW28,990.00

These calculations are only a guide. Please ask your conveyancer for exact calculations.

Farm For Sale in Kawambwa Central

50 Hectares

### Features

#### Exterior

Pool

Yes