



Alick Phiri
0763549295
alick.phiri@seeff.com



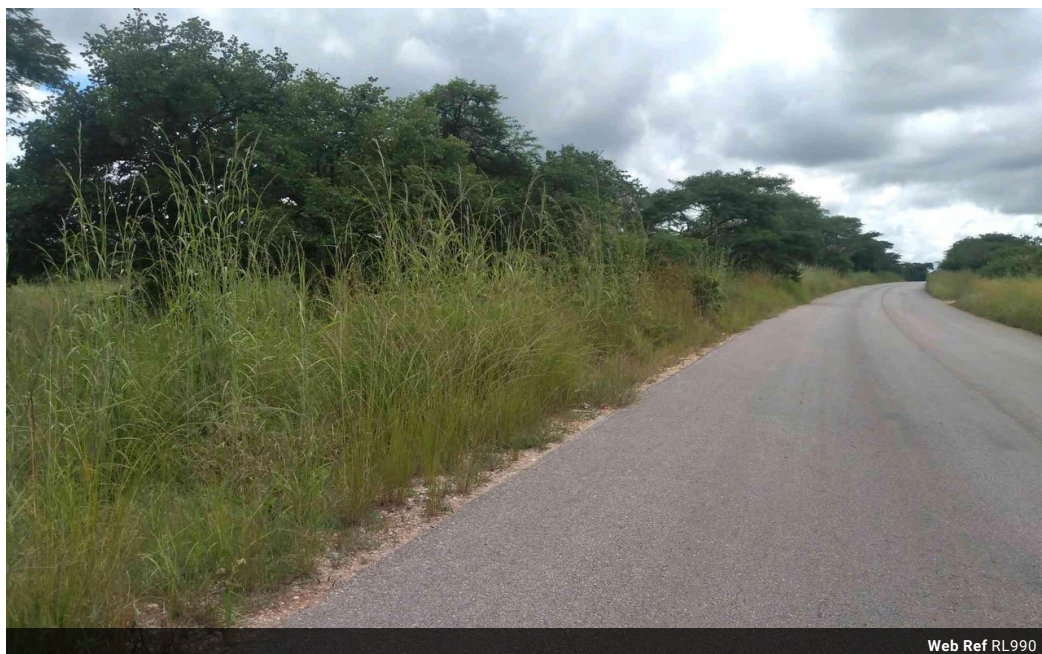
Kelvin Mwansa
+260 969 627 085

kelvin.mwansa@seeff.com

Contact **Lusaka**

260 954152925

Foxdale Court 114
1st Floor, Second Building
609 Zambezi Road
Roma
Lusaka
10101



Web Ref RL990



POA

0 0

Small Holding for sale along palabana Road

These are two vacant lands next to each other on palabana Road. Both have road frontage and are 27 and 18 Hectares respectively. Being sold as a whole or subdivision of at least 5 acres each.

Selling rate: K250,000 per acre

Call for viewing arrangements

Features

Exterior

Pool No