



Alick Phiri
0763549295
alick.phiri@seeff.com

Contact **Lusaka**

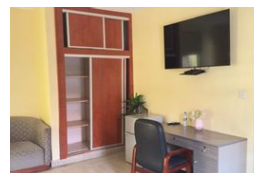
260 954152925

Foxdale Court 114
1st Floor, Second Building
609 Zambezi Road
Roma
Lusaka
10101

FEATURED



Web Ref CL314



POA

0 0

1,020 sqm Offices in Prospect Hill

These are office premises sitting on 1,830 sqm land in Lusaka's Prospect Hill off Independence avenue suitable for other uses such as a Lodge or Restuarant.

The offices include 4 Buildings with a total of 15 self contained rooms, 4 other rooms which are not self contained, Laundry room, Storage Rooms, Industrial grade culinary Kitchen, 100Kva Industrial Diesel Backup power, Backup Solar and connected to a 3 phase line.

Asking Price: USD3m

Features

Zoning Mixed Use

Sizes

Floor Size 1,020m²