



Elvira Brentnall
0968 336061
elvira@seeff.com

Contact **Lusaka**

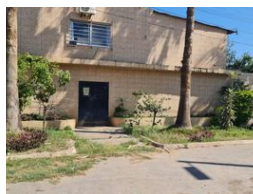
260 954152925

Foxdale Court 114
1st Floor, Second Building
609 Zambezi Road
Roma
Lusaka
10101

FEATURED



Web Ref CL325



POA

0 0

Offices, Warehouse & Residences

This is a property in a Light Industrial area,
Situating along busy road & close to CBD as well as G. North Rd
The location is sought after for warehousing, workshops, trucking & showrooms...
The plot measures 2000 sqm with following improvements:

Office block - ground floor 600 sqm,
4 bedroom apartment on the first floor - 420 sqm
3 small warehouses - one has a 2 bedroom flat above
Water supply is via private borehole, in a secure wall fence,
Great area for the above mentioned business types,

Features

Title	Leasehold		
Zoning	Industrial		
Interior		Sizes	
Power 3 Phase	Yes	Floor Size	1,200m ²
		Land Size	2,000m ²
Extras			
Borehole			