



Alick Phiri
0763549295
alick.phiri@seeff.com



Kelvin Mwansa
+260 969 627 085

kelvin.mwansa@seeff.com

Contact **Lusaka**

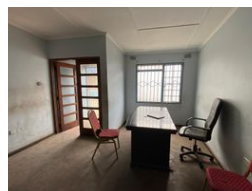
260 954152925

Foxdale Court 114
1st Floor, Second Building
609 Zambezi Road
Roma
Lusaka
10101

FEATURED



Web Ref CL320



ZMW13,600,000

0 0

2,666sqm Industrial Property in Industrial area

This is an industrial property having the following improvements;

- 1) Warehouse/Plant
- 2) Adjoining Offices with ablution block: Approximately 900sqm
- 3) 2 Sheds
- 4) Caretakers house
- 5) Guard House

The property sits on 2,666 square metres land or 0.6588 acres

Features

Zoning Industrial

Sizes

Floor Size	900m ²
Land Size	2,666m ²